



**Luminesce Mesh**  
Monofilament Stripe

pattern **Monofilament Stripe**  
Designed by Elizabeth Whelan 2004  
colour **Black**  
contents **76% flame retardant  
Polyester and 24 % Elastic**  
code **M10**



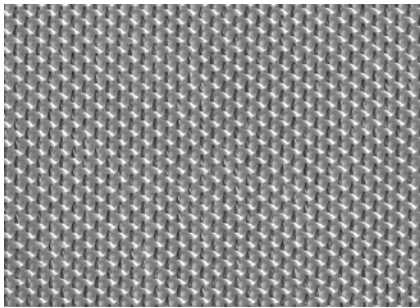
**Luminesce Mesh**  
Monofilament Stripe

pattern **Monofilament Stripe**  
Designed by Elizabeth Whelan 2004  
colour **Carbon**  
contents **76% flame retardant  
Polyester and 24 % Elastic**  
code **M11**



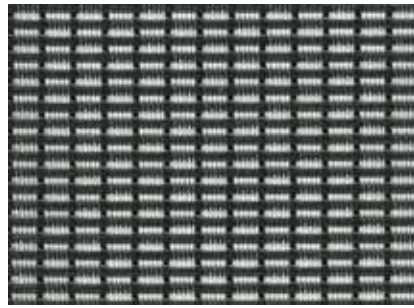
**Mesh**  
Torque

pattern **Torque**  
colour **Black**  
contents **47% Polyester, 46% Nylon  
and 7% Urethane**  
code **T10**



**Mesh**  
Torque

pattern **Torque**  
colour **Aluminium**  
contents **47% Polyester, 46% Nylon  
and 7% Urethane**  
code **T13**



**Luminesce Mesh**  
Silver Check

pattern **Silver Check**  
Designed by Elizabeth Whelan 2004  
colour **Alloy**  
contents **74% flame retardant  
Polyester and 26% Nylon**  
code **C12**