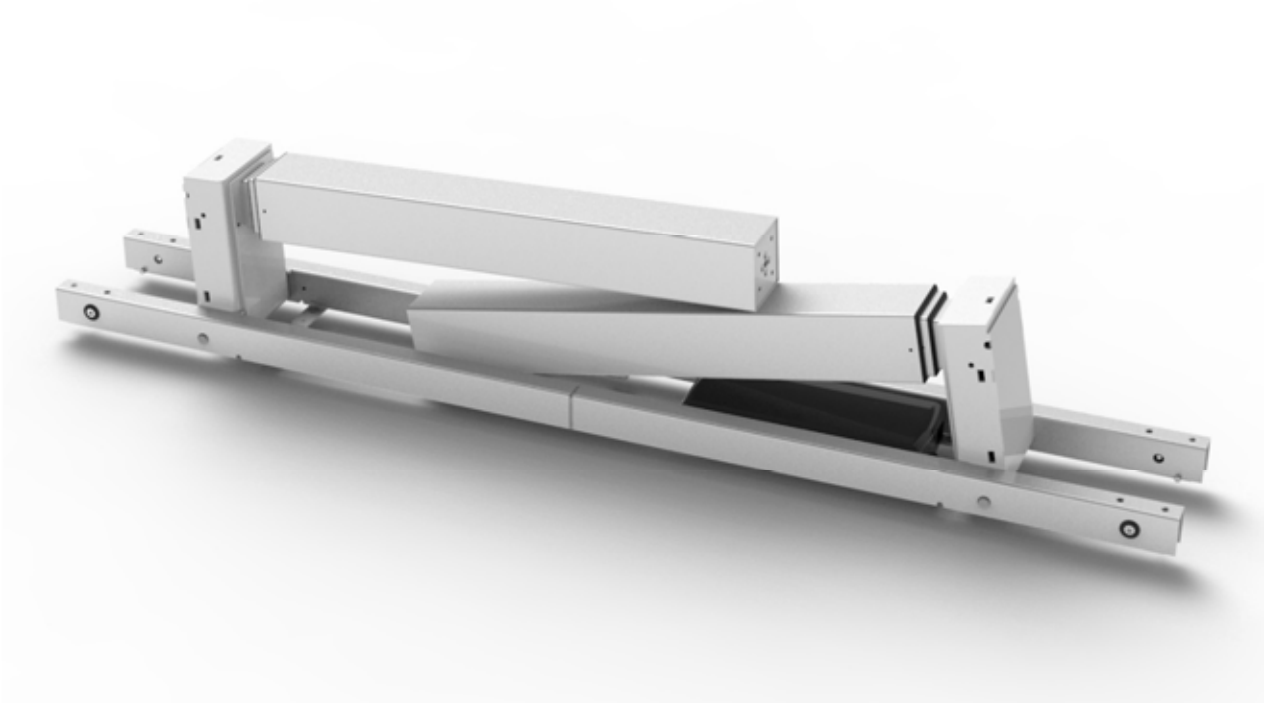


TECHNICAL SPECIFICATIONS

MOBEL POSTURE

ELECTRIC HEIGHT ADJUSTABLE DESK



Frame & columns

Frame height min	630 mm
Frame height max	1280 mm
Frame width min	1164 mm
Frame width max	1960 mm
Foot length	750 mm
Column dimensions	70 x 70 - 60 x 60 - 50 x 50 mm
Stroke	650 mm
Max. load	120 kg, Equally divided
Speed, 0-100 kg load	40 mm/sec
Speed, 100 -120 kg load	36 mm/sec
Noise level	39 dB
Duty cycle	10%, Max 2 min. run / 18 min. stop
Simultaneous spindle	Synchronized movements
Ambient temperature	0 - 45 C

Colours

Grey
RAL 9006

White
RAL 9016



TECHNICAL SPECIFICATIONS

MOBEL POSTURE

ELECTRIC HEIGHT ADJUSTABLE DESK



Control box

Dimension (L x W x H)	240 x 94 x 39,6 mm
Rated input	AC 100 - 240V 50Hz, 3A
Rated output	32 V, Max 10A
IP code	IP42
Anti collision including drive back 40 mm	Upwards + 20 kg / downwards + 40 kg
Power consumption in standby	< 0.1 W
Power consumption in use	280 W
Duty cycle	10%, Max 2 min. run / 18 min. stop
Connection of actuators	2 Pcs.
Lifetime	10.000 cycles
Safety functions	Overload protection Overheat protection Timeout/unbalance protection
Soft start/stop function	
Exchangeable main cable	